



**FLORIDA DEPARTMENT OF
LAW ENFORCEMENT**

**Mutual Aid
for
Law Enforcement**

LEGAL AUTHORITIES

CHAPTERS 252 & 23 F.S.S.



Chapter 252, F.S.S. - The State Emergency Management Act authorizes the State Comprehensive Emergency Management Plan which identifies FDLE as the lead agency for ESF-16, Law Enforcement and Security.

Requires each county to establish and maintain an emergency management agency and develop an emergency plan that is coordinated and consistent with state plan

Chapter 23, F.S.S. - The Florida Mutual Aid Act (Law Enforcement) assigns FDLE with the command and coordination of state law enforcement during disasters.

LEGAL AUTHORITIES

CHAPTERS 252 & 23 F.S.S.



EMAC - The Emergency Management Assistance Compact has been accepted by all states and creates provisions for the sharing of resources across state boundaries.

“Law Enforcement exception.” Authority is conveyed only with very specific language.



RESPONSE PLANS

National Response Framework (NRF)

Florida Comprehensive Emergency Management Plan (CEMP)

Florida Mutual Aid Plan (MAP)

County Emergency Management Plans

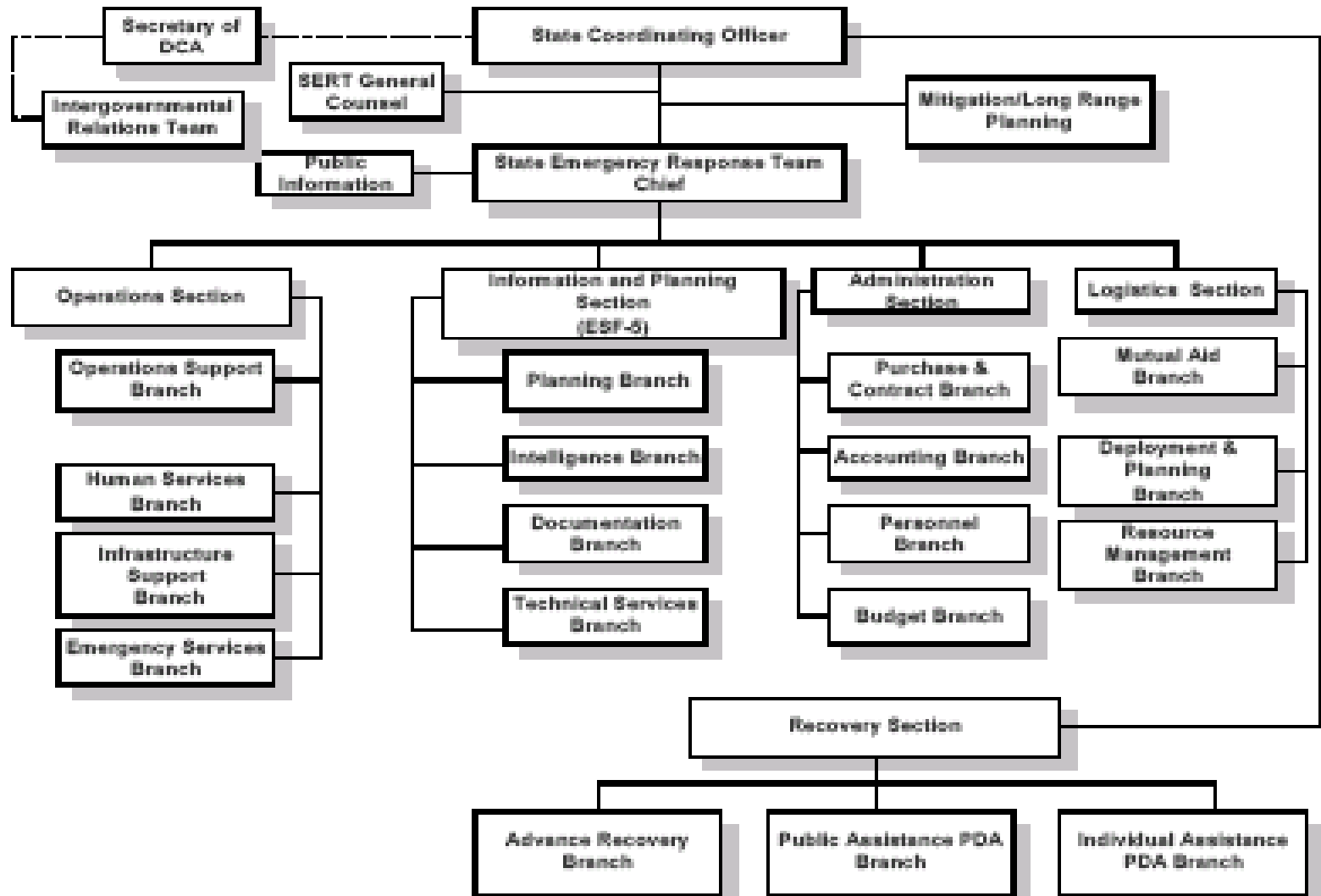
Evacuation Plans

Florida Contra-flow Plan (One-Way Plan)

MUTUAL AID



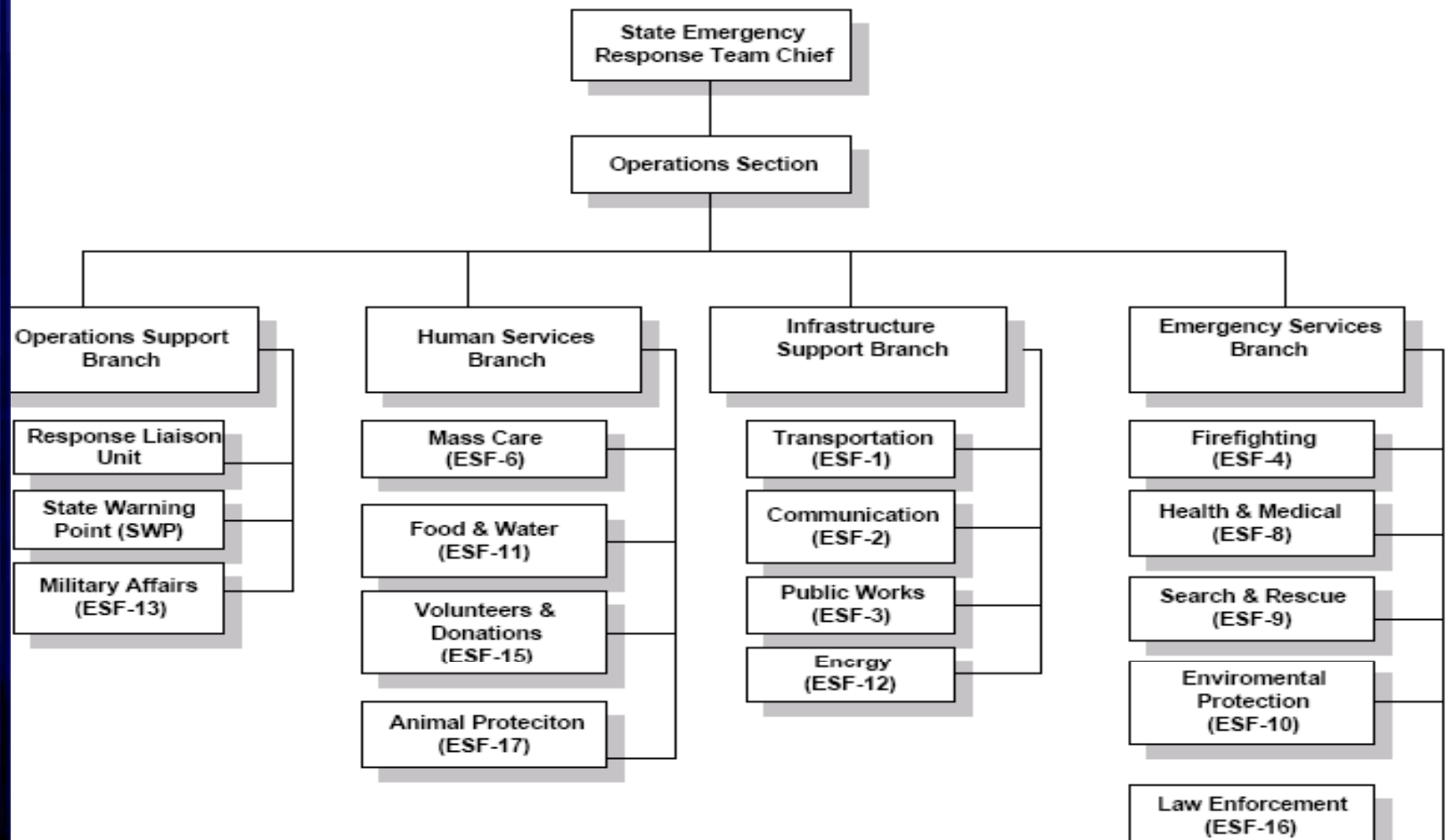
STRUCTURE





STRUCTURE

STATE EMERGENCY RESPONSE TEAM OPERATIONS SECTION





ESF-16 PARTNERS

Florida Department of Law Enforcement
Florida Highway Patrol
Florida Fish & Wildlife Conservation Commission
DOT Motor Carrier Compliance
Agricultural Law Enforcement
DEP Law Enforcement
DABT
Division of Insurance Fraud
State Fire Marshal Fire & Arson
Lottery Security
University Police
Department of Corrections
Department of Juvenile Justice
Florida Sheriffs Task Force
Florida Police Chief's Association
Dept. of Justice – ATF



FLORIDA MUTUAL AID

Routine daily operations

Executive Order

FDLE provides liaisons to impacted Sheriff(s), Police Chiefs & County Emergency Operation Center(s) as appropriate.

In the State EOC (Tallahassee), FDLE maintains contact with the DEM management and other ESF's



State/Local EOC Operations

What happens in an EOC?

- Coordination of response between ESF's
- Planning
- Provide information
- Identify needs and available resources
- Coordinate with LE-MAC, LE-Unified Area Commands, State/local EOC's, other Law Enforcement
- EMAC



RESPONSE PROTOCOLS

Conference calls

Law enforcement liaison

County EOC liaison

Activation a Law Enforcement Multi-Agency Coordination Group, LE-MAC

Regional commanders from state law enforcement Primary Agencies will report to the LE-MAC to coordinate assistance



RESPONSE PROTOCOLS

If possible law enforcement assets will be pre-staged for an immediate response.

Specific criteria for response are established:

- Staging
- Check-in / Check-out
- Initial mission assignments
- Logistical support

Continue to communicate with local jurisdictions.

Utilize Response Hierarchy

- State Law Enforcement
- Mutual Aid Law Enforcement
- Florida National Guard

Utilize Response Matrix



RESPONSE PROTOCOLS

HURRICANE Intensity Level		IMPACTED POPULATION		
		Under 1,000,000	1,000,000 to 2,000,000	Over 2,000,000
Category 1	Primary State Law Enforcement	150	200	250
	DABT-DBPR	6	9	11
	OALE-DOACS	9	12	15
	MCCO-DOT	10	13	16
	FDLE	18	24	30
	FHP	74	98	123
	FWCC	28	37	47
	DEP	6	8	10
Category 2	Primary State Law Enforcement	400	450	500
	DABT-DBPR	17	19	22
	OALE-DOACS	24	27	30
	MCCO-DOT	26	29	32
	FDLE	48	54	60
	FHP	196	221	245
	FWCC	75	84	94
	DEP	15	17	19

MUTUAL AID



RESPONSE PROTOCOLS

HURRICANE Intensity Level		IMPACTED POPULATION			
		Under 1,000,000	1,000,000 to 2,000,000	Over 2,000,000	
Category 3	Primary State Law Enforcement	650	700	750	
	DABT-DBPR	28	30	32	
	OALE-DOACS	38	41	44	
	MCCO-DOT	42	45	48	
	FDLE	77	83	89	
	FHP	319	343	368	
	FWCC	122	131	140	
	DEP	25	27	29	
	Plus FLNG for LE & Security	200	500-1000	3000	
	Category 4	Primary State Law Enforcement	875	900	900
	DABT-DBPR	38	39	39	
OALE-DOACS	52	53	53		
MCCO-DOT	56	58	58		
FDLE	104	107	107		
FHP	429	441	441		
FWCC	164	168	168		
DEP	33	34	34		
Plus FLNG for LE & Security	450	2000-3000	4500		



RESPONSE PROTOCOLS

HURRICANE Intensity Level		IMPACTED POPULATION		
		Under 1,000,000	1,000,000 to 2,000,000	Over 2,000,000
Category 5	Primary State Law Enforcement	875	1050	1200
	DABT-DBPR	38	45	52
	OALE-DOACS	52	62	71
	MCCO-DOT	56	67	77
	FDLE	104	125	143
	FHP	429	515	588
	FWCC	164	196	224
	DEP	33	40	46
	Plus FLNG for LE & Security	450	3000-3500	5000

MUTUAL AID



RESPONSE PROTOCOLS POST EVENT / IMPACT

Local Request

LE-MAC evaluates and fills requests

State EOC, ESF 16.



RESPONSE PROTOCOLS

Do what needs to be done!

**Send people home if they
don't!**

**Most Important Trait:
“FLEXIBILITY”**



RESPONSE MANAGEMENT

Utilize Incident Management Team (IMT) if available.



DEMOBILIZATION

Conduct daily assessments of assigned missions

Florida National Guard

Mutual Aid

Out of Region State Resources

The last resource considered for release is the impacted Regional state agencies

MUTUAL AID



Disaster Fatality Confirmation

The local Medical Examiner has the responsibility for determining cause of death

The FDLE Medical Examiners Commission staff receives reports

Death will be documented in "EMConstellation"

